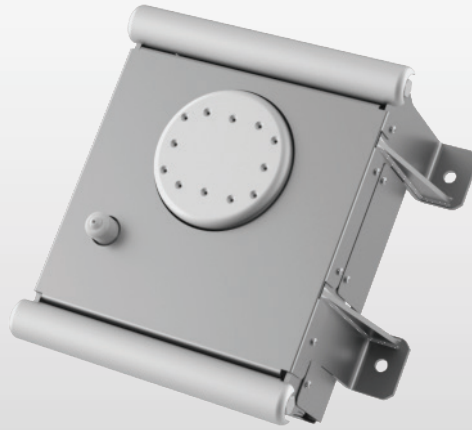


AMS

Active Microwave Sensors



P2

P2 | Felt permeability meter and moisture meter in the press section.

INCREASING
QUALITY

1

IMPROVING
EFFICIENCY

2

MAXIMIZING
RUNNABILITY

3

Quality – Efficiency - Runnability

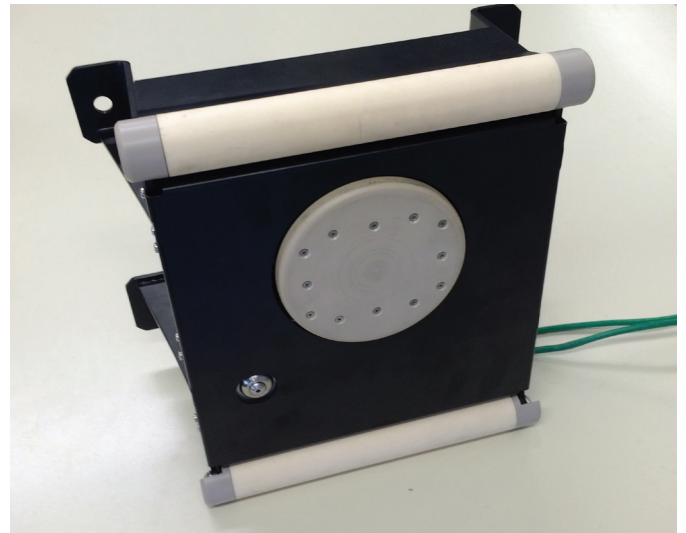
Felt moisture and water permeability profiles are key pieces of information that help the decision making process to improve machine performance, because the conditioning felt, nip loading problems, uneven wear on the felt are the “enemies” of press section efficiency in a paper machine.

An integrated solution

The P2 works with a proprietary patented technology, based on planar active sensors, that allows fast, accurate and “environment independent” measurements and achieves instrument measurements up to 3000 g/m² of H₂O.

Sensor data is collected by the AMS HUB and, using the dedicated software, various reports can be produced such as machine direction (MD) and cross machine direction (CD) profiles and trends over time.

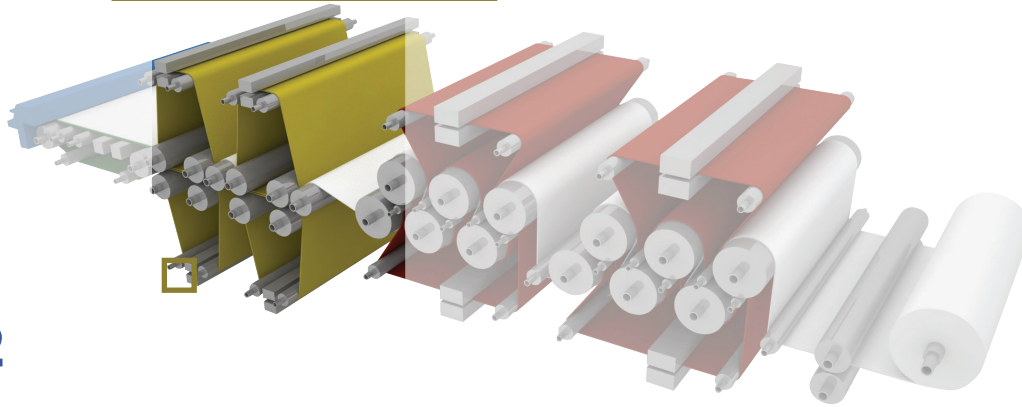
High frequency and statistical analysis can also be performed in order to optimise the press section performance.



Main Features

- Fully automatic measurement system
- Operator safety tools
- Process optimisation
- Energy saving
- Less downtime caused by paper breaking
- Increased felt life
- Comparison of different felts over life span
- Easy integration into complex AMS Systems

PRESS SECTION



Flexible positioning

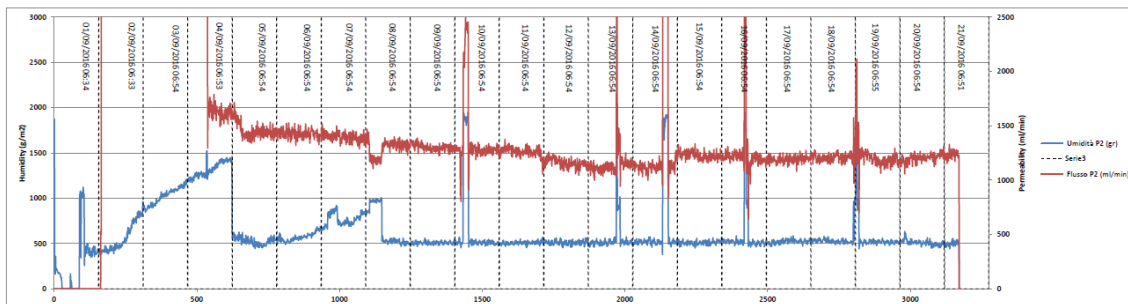
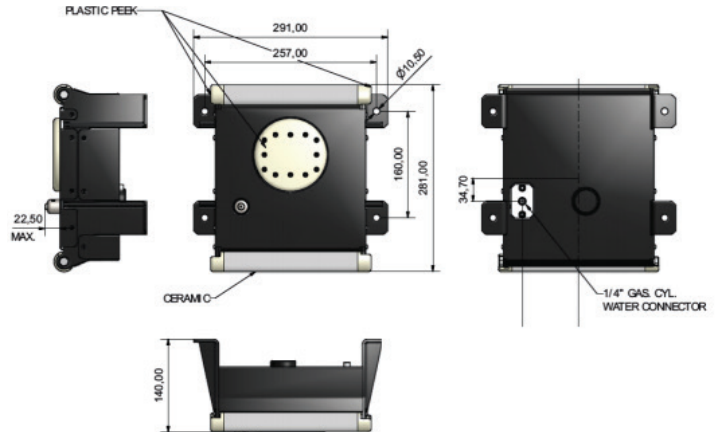
Felt moisture and water permeability profiles are key pieces of information that help the decision making process to improve felt performance and optimise machine performance.

The P2 sensor can achieve these tasks easily and, thanks to its small size, it can be installed on any press section, at a fixed point or on a transversal beam for accurate, reliable profiles in total safety. This is also a significant help to the felt cleaning system in performing a precise job.

Data analysis with the AMS manager

The P2 performs high performance, contemporaneous measurement of moisture and permeability, even in scanning mode, for a highly accurate CD analysis of felts.

- Easy to integrate onto beams for CD scanning.
- CD and MD moisture profile of felt, rate of measurement up to 2048 samples/s.
- CD and MD permeability profile of felt, rate of measurement up to 512 samples/s.
- CD and MD surface temperature of felt.



Technical specifications

Measurement specifications

Water content measurement range	g/m2 0 to 3.000
Resolution	g/m2 1
Sample rate	Sample/sec 1024 to 2048
Flow measurement range	ml/min 100 to 2500
Resolution	ml/min 0,1
Sample rate	Sample/sec 256 to 512

Environmental

Operating temperature	°C 10-80
Protection grade	IP 68

Mechanical Specificatio /R1 Sensor

Weight	Kg 9,5
Dimension (sensor head)	mm 290 x 275 x 140
Dimension (body material)	AISI 304 passivated and 316 Steel

Accessories

- 7m male soriu pigtail
- Fixing screws

Advanced Microwave Engineering s.r.l.

Via Lucca 50/54, Firenze 50142, Italy
 Telefono: +39 055 73921 Fax: +39 055 7392 141 Email: sales@ameol.it
www.ameol.it

AMS_P2_v18

